



## **INSTRUCTIONS FOR:**

### **4140-TC – Bolexion surround**

#### **Tools required:**

1. Hand Saw (for sizing required)
2. Level
3. Screwdriver/drill
4. (2) 8-12 x 2 1/2" screws
5. 3/16" Drill bit & Countersink Bit
6. Caulking gun
7. 1 tube of Premium polyurethane construction adhesive

#### **READ INSTRUCTIONS THOROUGHLY PRIOR TO ATTEMPTING INSTALLATION. DRY FIT RECOMMENDED PRIOR TO APPLYING ADHESIVE**

#### **Step 1: Surround Legs**

- (a) Mark & cut bolexion legs at bottom to required height 'A' determined by firebox opening (Fig 1-1). Ensure height of each leg is "level" to each other.
- (b) Pre-drill & countersink at predetermined screw location (Fig 1-2). Apply generous/continuous bead of construction adhesive to back of surround, position back to set location and screw tight to wall.

#### **Step 2: Surround Header**

- (a) Measure req'd header width 'B' (Fig 1-3). Mark & cut bolexion header to this measurement. Apply generous/continuous bead of construction adhesive to face of wall where back of header will contact and top face of tabs on leg surrounds.
- (b) Carefully position header to set location and rest on leg surround tabs. (Fig 1-4). Any excessive adhesive should be removed & cleaned immediately as per manufacturers instructions.

Our surrounds are designed to adjust to large variety of fireplace sizes. It is possible to cut the surround legs & header to allow adjustment. If filling is required due to uneven walls, we recommend DAP "ALEX PLUS" (ALMOND) as an appropriate colored caulk.

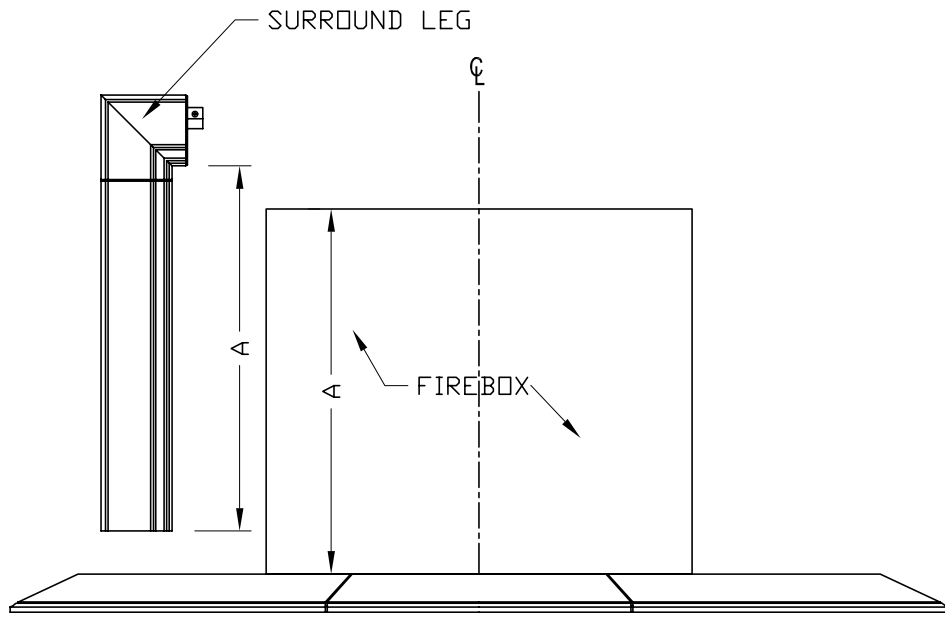


Fig. 1-1

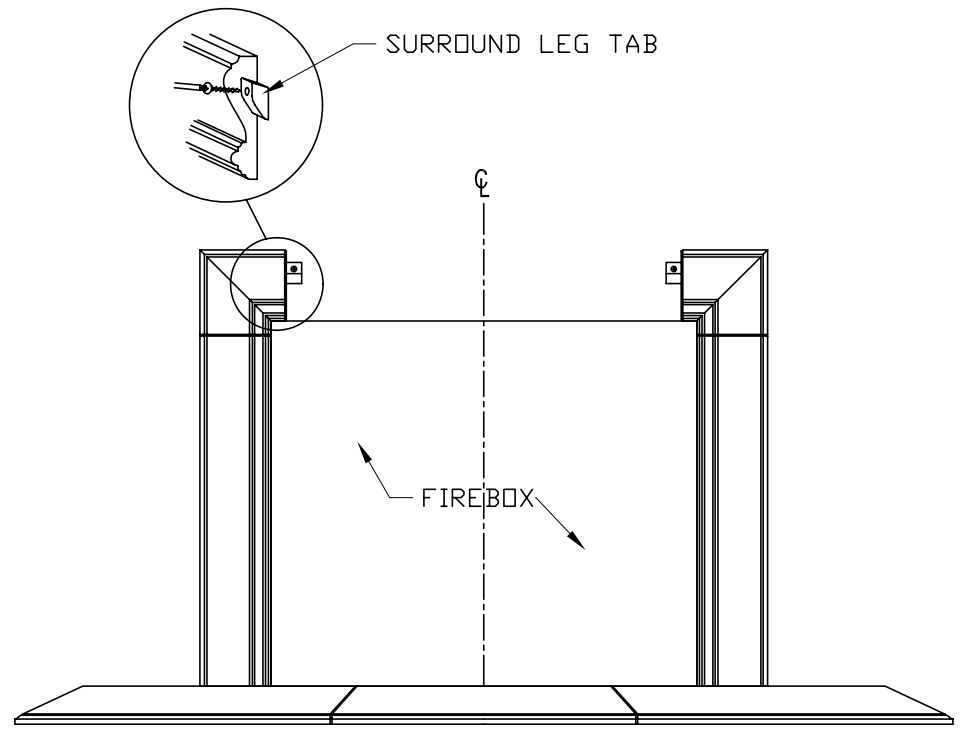


Fig. 1-2

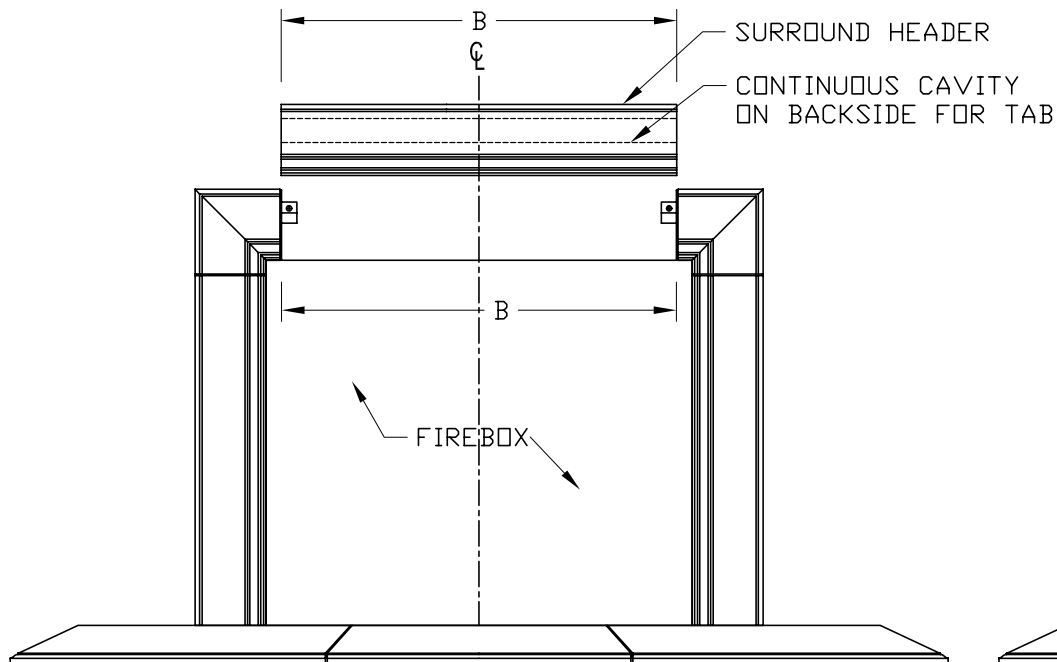


Fig. 1-3

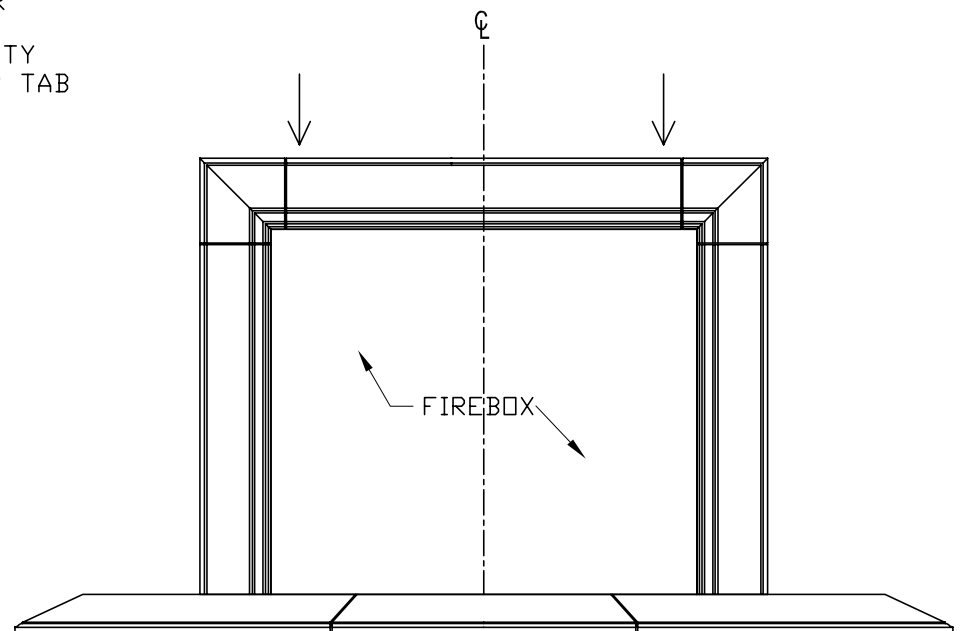


Fig. 1-4